

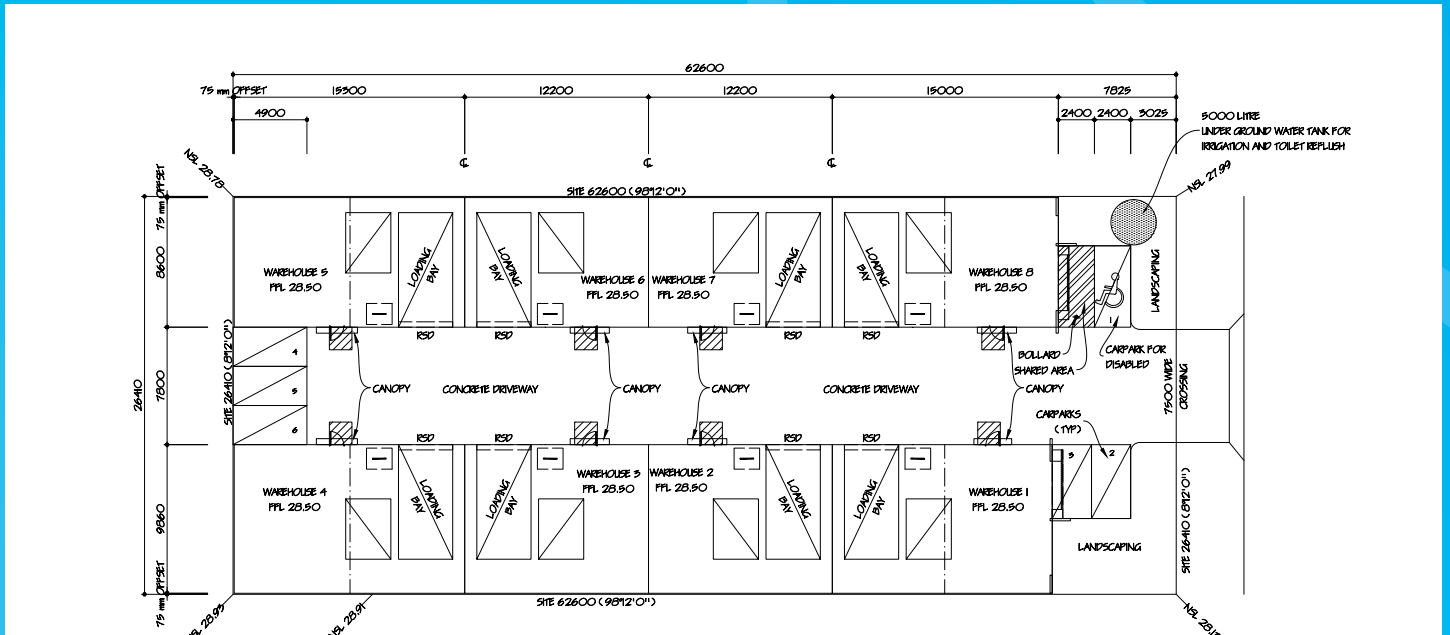
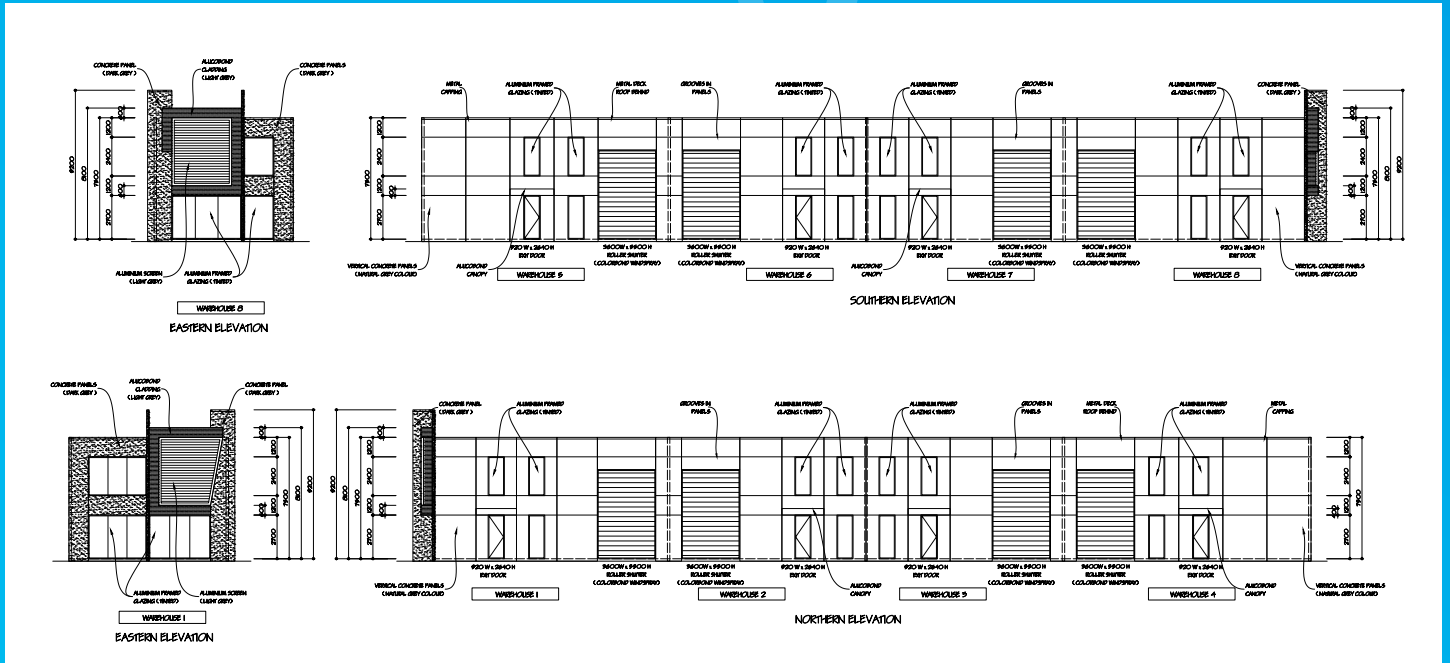
EVANS PARK IS AN INTEGRATED, MASTER PLANNED BUSINESS VILLAGE LOCATED ON EVANS ROAD IN CRANBOURNE WEST.

FOR SALE. LOTS 24 & 25 PLANNING PERMIT FOR SELF STORAGE EACH LOT \$389,000 (1,653m²)



- JUNE 2015 SETTLEMENT
- ALSO SUITS 900m² INTEGRATED OFFICE/WAREHOUSE (STCA)
- STAGE 1 ALMOST SOLD OUT! 5 LOTS LEFT!

LOTS 24 & 25, MORIALTA ROAD, CRANBOURNE WEST



- Proposed supermarket on-site with café, food outlets, medical centre and childcare
- Opposite the new Quarters residential community and existing residential
- 10 minutes from the South Gippsland & Monash Freeways and EastLink
- 5 minutes from Cranbourne Town Centre and Cranbourne Station

Paul O'Brien 0402 892 896
pobrien@investa.com.au

*All information, maps, areas and prices are approximate only and are given as guidance only. Investa Property Group do not guarantee, warrant or represent that the information contained in this document is correct. Any interested parties should undertake their own enquiries as to the accuracy of the information. Investa Property Group excludes unequivocally all inferred or implied terms, conditions and warranties arising out of this document and excludes all liability for loss and damage arising there from. January 2015.