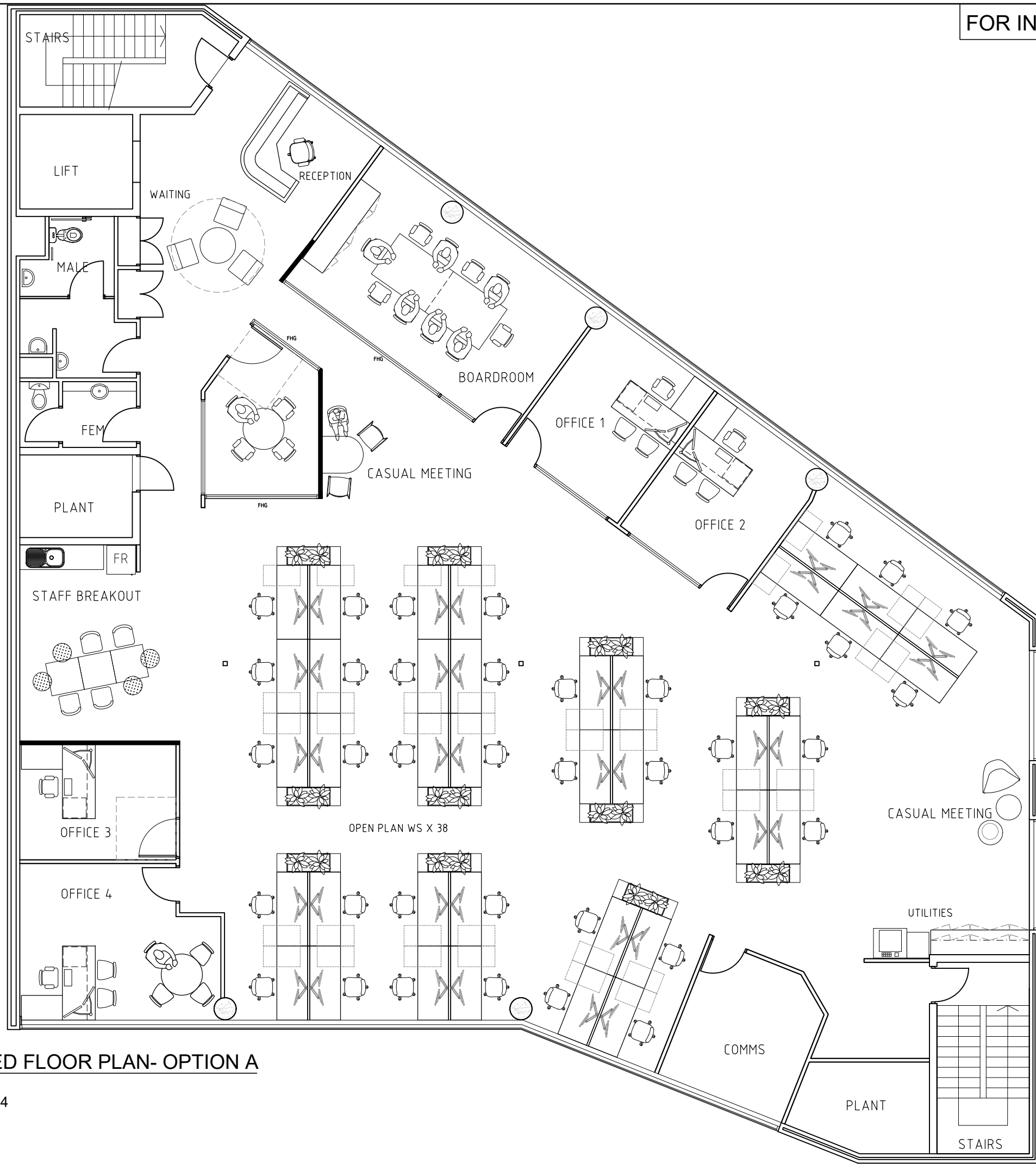


FOR INFORMATION ONLY



PARTITIONING LEGEND	
	EXISTING BRICK OR PLASTERBOARD PARTITION OR GLAZING
	NEW FULL HEIGHT PLASTERBOARD PARTITION 64mm STEEL STUDS COVERED WITH 13mm THICK PLASTERBOARD. FILLED WITH POLYESTER INSULATION. PAINTED IN 2 COATS OF DULUX WASH AND WEAR. COLOUR AS SPECIFIED. 100mm CLEAR ANODISED ALUMINIUM SKIRTING
	NEW FULL HEIGHT GLASS PARTITION CLEAR FULL HEIGHT GLASS. SILICONE BUTT JOINTED. CONFORMING TO AUSTRALIAN STANDARDS 1288. FIXED IN 45MM X 25MM ALUMINIUM SUITE
	NEW 1/2 HEIGHT PLASTERBOARD PARTITION TO 1200MM H WITH GLASS ABOVE TO CEILING HEIGHT. 64mm STEEL STUDS COVERED WITH 13mm THICK PLASTERBOARD. PAINTED IN 2 COATS OF DULUX WASH AND WEAR. COLOUR AS SPECIFIED. 100MM CLEAR ANODISED ALUMINIUM SKIRTING. CLEAR GLASS ABOVE FIXED IN AN ALUMINIUM SUITE AND SILICONE BUTT JOINTED.
	NEW 1/2 HEIGHT PLASTERBOARD PARTITION TO 1200MM H 64mm STEEL STUDS COVERED WITH 13mm THICK PLASTERBOARD. PAINTED IN 2 COATS OF DULUX WASH AND WEAR. COLOUR AS SPECIFIED. 100mm CLEAR ANODISED ALUMINIUM SKIRTING
	DEMOLITION FULL HEIGHT BRICK OR PLASTERBOARD PARTITIONS, DOORS AND GLAZING TO BE REMOVED.
	CHANGE IN CEILING HEIGHT OR BULKHEAD CEILING HEIGHT RAISED TO 3500 AFL
	NEW 1800mm HIGH DUCTED SCREEN 900mm LONG SCREEN COVERED IN STANDARD RIM FABRIC COLOUR AS SPECIFIED. ALUMINIUM FRAME POWDERCOATED IN STANDARD DULUX POWDERCOAT COLOUR AS SPECIFIED. BASE DUCTED.
	EXISTING DOORS
	NEW DOOR REFER TO DOOR SCHEDULE MIN 920mm
	CEILING FINISH (CT - CEILING TILE, F P/B - FLUSH PLASTERBOARD) CEILING HEIGHT
	N NEW E EXISTING R RELOCATE

A	FOR APP	28.05.18
---	---------	----------

CONTRACTORS MUST CHECK ALL DIMENSIONS ON SITE BEFORE STARTING ANY WORK OR SHOP DRAWINGS. FIGURED DIMENSIONS TO TAKE PRECEDENCE OVER SCALE READINGS.

**CLIENT**  
XXXX  
42 KISHON RD  
APPLECROSS



www.medwestinteriors.com.au  
Mob: 074755982  
Ph: 1300330249  
Email: info@medwestinteriors.com.au

**DRAWING TITLE**  
CONCEPT PLAN

DATE	DRAWN BY	QUOTE #	DRAWING NO.
28.05.18	JV		00
SCALE	REVISION		
1:100@A3	A		

**PROPOSED FLOOR PLAN- OPTION A**  
Scale 1:100  
TOTAL SM: 424