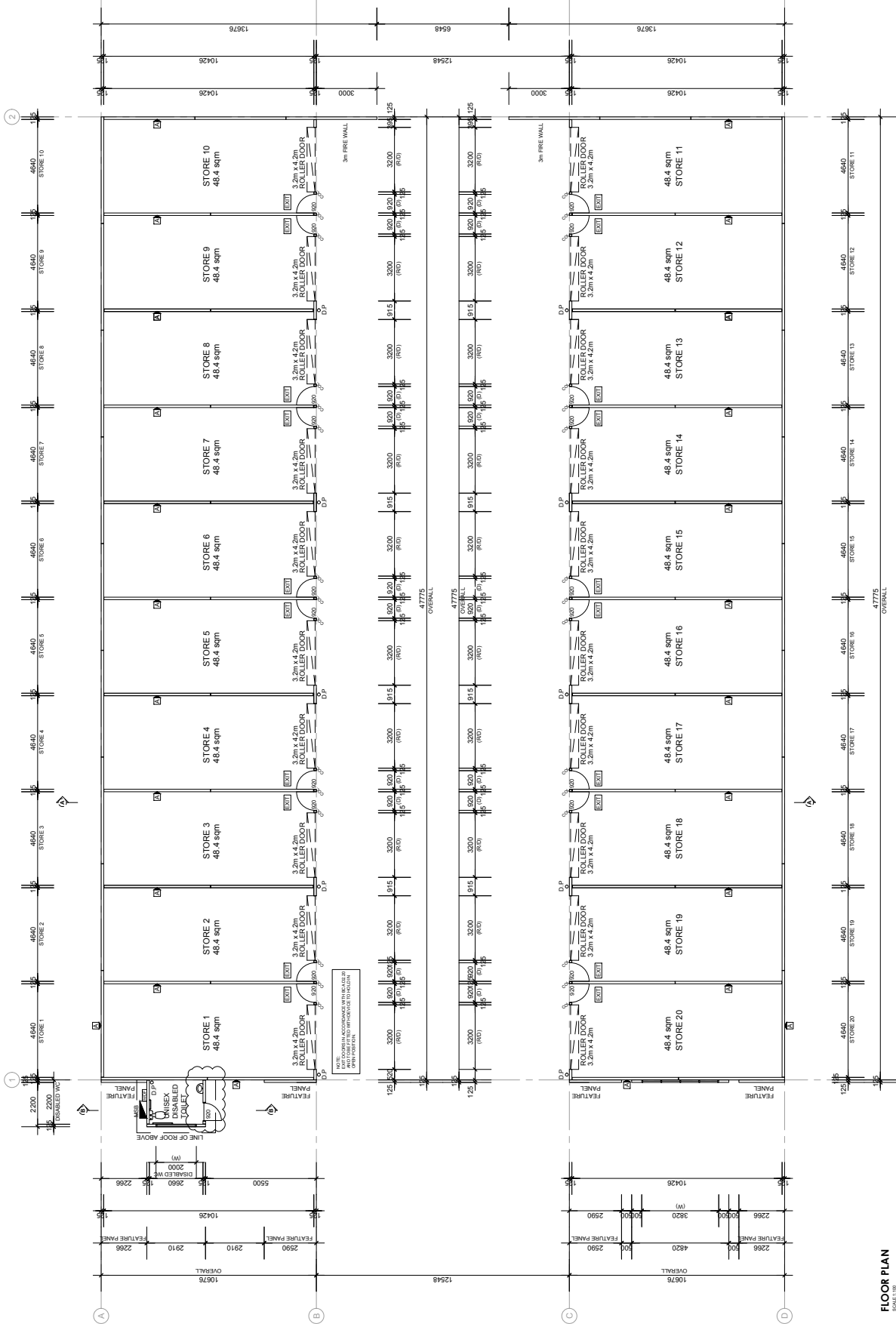


NOTE

- EXIT DOORS IN ACCORDANCE WITH BCA D2.26 TO BE FITTED
- ALL EXIT DOORS IN ACCORDANCE WITH D2.21 OPERATION OF LATCH
- ALL EXIT DOORS IN ACCORDANCE WITH D2.22
- ALL EMERGENCY LIGHTING IN ACCORDANCE WITH AS 1588 CLASS 10.3
- ALL EMERGENCY LIGHTING IN ACCORDANCE WITH AS 1588 CLASS 10.3
- ALL TOILETS IN ACCORDANCE WITH AS 1981.1000 CLASS 15.

WALL TYPE LEGEND

- ☐ PRE-CAST CONCRETE PANEL
- ☐ WITH SELECTED PAINT FINISH



FLOOR PLAN

ID	REVISION	DATE	COMMENTS
'D'	140618		FOR APPROVAL - DA - FEATURE TO FRONT FACADE - TESTS ADDED
'C'	104118		FOR APPROVAL - DA - INFO UPDATED
'B'	020918		FOR APPROVAL - DA - INFO UPDATED
'A'	141117		FOR QUOTING PURPOSES
'V'	131117		FOR APPROVAL

REV	DATE	COMMENTS

DRAWING TITLE: FLOOR PLAN		Drawn By: K.P.
CLIENT: MIKE TEAVEE PTY LTD		Date: 13-11-17
ADDRESS: LOT 115 (16) FOCAL WAY, BAYSWATER.		Scale: 1:100@ A1
		PAGE: A-02
		COPYRIGHT

CHROME CONSTRUCTION

CHROME CONSTRUCTION PTY LTD
 A/10/1110 BUNNINGS RD
 WARRACOC BEACH
 WA 6150
 W: www.chromeconstruction.com.au

MIKE TEAVEE PTY LTD

1110 BUNNINGS RD
 WARRACOC BEACH
 WA 6150

CHROME CONSTRUCTION

CHROME CONSTRUCTION PTY LTD
 A/10/1110 BUNNINGS RD
 WARRACOC BEACH
 WA 6150
 W: www.chromeconstruction.com.au