

House Offered for Sale

23 Rotherham Street Belmont VIC 3216

 2  1  1

Indicative Selling Price

For the meaning of this price see consumer.vic.gov.au/underquoting

Range between \$510,000 & \$540,000

Median Sale Price

\$450,000 Houses in Belmont between Aug 2016 - Jul 2017

Source: CoreLogic

Comparable Property Sales

These are the 3 properties sold within 5 kilometres of the property for sale in the last 18 months that the estate agent or agent's representative considers to be most comparable to the property for sale.



36A Clarke Avenue Belmont VIC 3216

 3  2  -

Sold Price

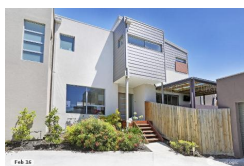
\$610,000

Sold Date

02-Aug-16

Distance

0.42km



6/27 Mt Pleasant Road Belmont VIC 3216

 3  2  2

Sold Price

\$498,500

Sold Date

29-Jun-16

Distance

1.39km



1C South Street Belmont VIC 3216

 4  2  2

Sold Price

\$500,000

Sold Date

07-Jul-16

Distance

0.64km

DISCLAIMER Whilst all reasonable effort is made to ensure the information in this publication is current, CoreLogic does not warrant the accuracy or completeness of the data and information contained in this publication and to the full extent not prohibited by law excludes all for any loss or damage arising in connection with the data and information contained in this publication.

The State of Victoria owns the copyright in the Property Sales Data and reproduction of that data in any way without the consent of the State of Victoria will constitute a breach of the Copyright Act 1968 (Cth). The State of Victoria does not warrant the accuracy or completeness of the Property Sales Data and any person using or relying upon such information does so on the basis that the State of Victoria accepts no responsibility or liability whatsoever for any errors, faults, defects or omissions in the information supplied.

House Offered for Sale

23 Rotherham Street Belmont VIC 3216

 2  1  1

Indicative Selling Price

For the meaning of this price see consumer.vic.gov.au/underquoting

Range between \$510,000 & \$540,000

Median Sale Price

\$450,000 Houses in Belmont between Aug 2016 - Jul 2017

Source: CoreLogic

Comparable Property Sales

These are the 3 properties sold within 5 kilometres of the property for sale in the last 18 months that the estate agent or agent's representative considers to be most comparable to the property for sale.



2/20 Mitchell Street Belmont VIC 3216

 3  2  2

Sold Price

\$525,000

Sold Date

08-Feb-17

Distance

1.73km

DISCLAIMER Whilst all reasonable effort is made to ensure the information in this publication is current, CoreLogic does not warrant the accuracy or completeness of the data and information contained in this publication and to the full extent not prohibited by law excludes all for any loss or damage arising in connection with the data and information contained in this publication.

The State of Victoria owns the copyright in the Property Sales Data and reproduction of that data in any way without the consent of the State of Victoria will constitute a breach of the Copyright Act 1968 (Cth). The State of Victoria does not warrant the accuracy or completeness of the Property Sales Data and any person using or relying upon such information does so on the basis that the State of Victoria accepts no responsibility or liability whatsoever for any errors, faults, defects or omissions in the information supplied.