

Scale 1:12,500 - Lengths are in Metres.



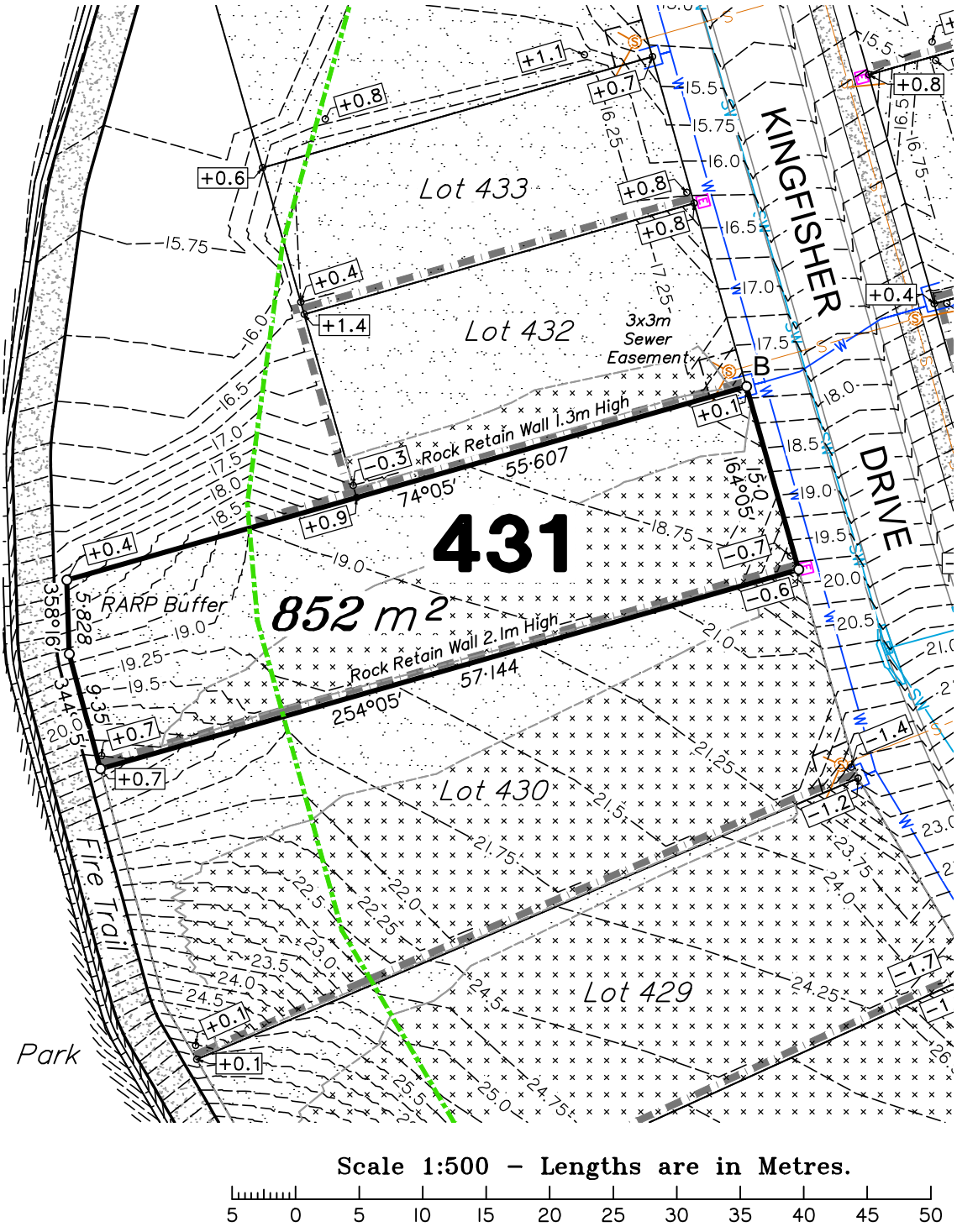
Scale 1:2000 - Lengths are in Metres.

DETAIL SURVEY COMPLETED BY DEFINIUM PLAN 10700-1 24/7/2006. ENGINEERING DESIGN BY COVEY & ASSOCIATES CONSULTING ENGINEERS PLANS 151871 C series Rev C DATED 19/08/2016.

DISCLOSURE PLAN
FOR PROPOSED ALLOTMENT **431**
Dated 24th January 2017

This plan shows details of proposed allotment 431 on the Proposal Plan 151871 Sheet RL04 Rev E dated 31st October 2016 which complies with a Subdivision Application approved by Sunshine Coast Regional Council, subject to conditions.

The area being proposed allotment 431 described as part of Lot 1 on SP265560, Parish of Maroochy, County of Canning and situated at Yandina Bli Bli Road, Bli Bli. The allotment is located from the south western most point of Lot 227 on SP278623 to proposed allotment 431 with a cadastral connection (A-B) as shown, containing an area of 852 square metres, more or less.



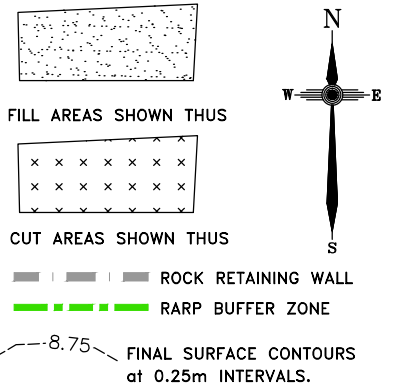
Scale 1:500 - Lengths are in Metres.

PARKLAKES II ESTATE PRECINCT

Disclosure Plan
STAGE 11

PARKLAKES II ESTATE
Yandina-Bli Bli Road, Bli Bli
PROPOSED LOT 431

ALL FILL WITHIN ALLOTMENTS IS TO LEVEL 1 INSPECTION AND TESTING IN ACCORDANCE WITH AS3798-2007



Note
Contour interval is shown at 0.25 metres.

Revisions	Surveyed	Drawn	Checked	Passed	Date	
A	ORIGINAL PLAN	DEF	MH	AJP	AJP	24.01.17

DSQ
LAND SURVEYORS

SUNSHINE COAST
PO Box 1073, Buddina QLD 4575
mail@dsqsurvey.com Ph: (07) 5437 8555
www.dsqsurvey.com ABN: 91 615 043 251
ACN: 615 043 251

WESTERN DOWNS DARLING DOWNS MACKAY

Signed JB
Cadastral Surveyor/Director
Date 24/01/2017

Map Ref.: 9544-44331

Horiz. Datum	MGA Z56	Vert. Datum	AHD
Origin	PSM103254	Origin	PSM 35474
		RL	9.722 AHD
Parish:	MAROOCHY	County:	CANNING
Locality:	BLI BLI		
Local Government:	SUNSHINE COAST REGIONAL COUNCIL		

SHEET 1 OF 1 Scale **At A3 size**
COMPUTER FILE 12626 DIS-11
DRAWING NUMBER **12626 DIS-431** REV. **A**

2017/01/27 W:\Definium\Jobs\2626 Coveys Parklakes II\Data\Survey\Drafting\Disclosure\Stage 11\2626 DIS-11.dwg